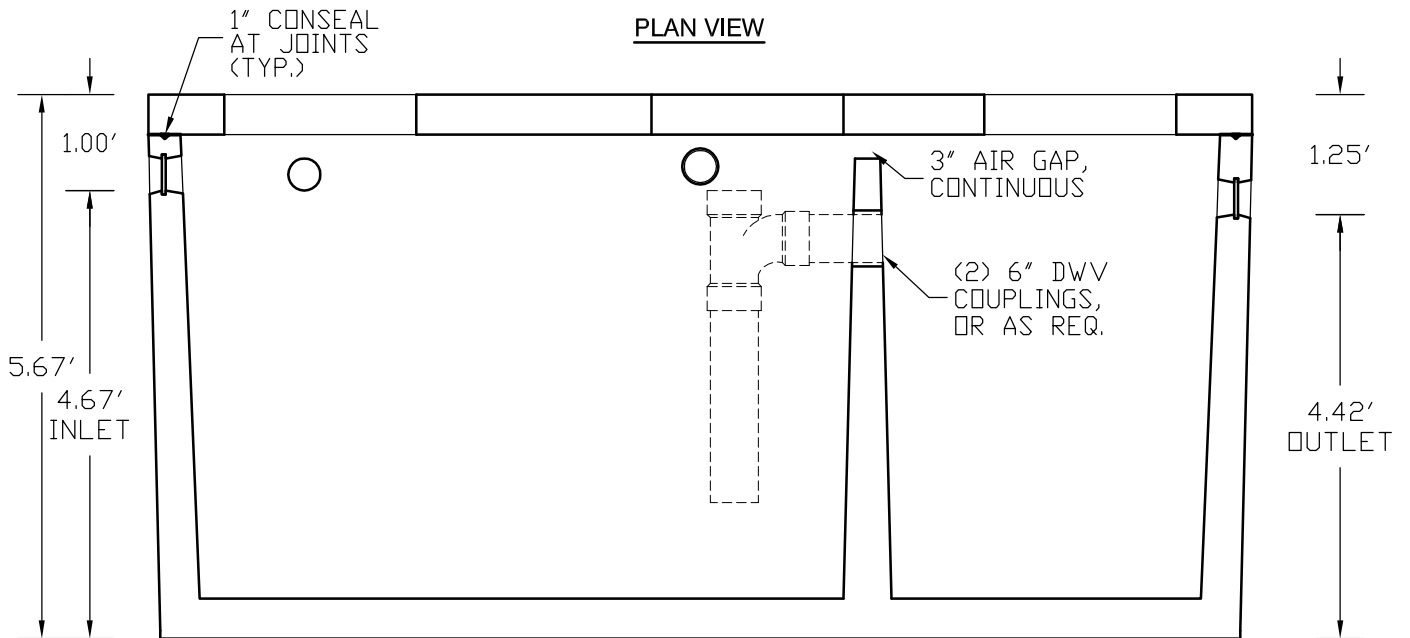


PLAN VIEW



SECTION VIEW

1500 GALLON GREASE INTERCEPTOR HS20-44 TRAFFIC RATED

1 OF 3

DATE DRN	7/19 2016	SCALE	NTS	DRN BY	MAP	CIVIL ENGINEER'S STAMP CIRCULAR DEQ-4 2013 ED.	STRUCTURAL ENGINEER'S STAMP
DATE STAMPED							
DRAWING	GREASE INTERCEPTOR 1500 GALLON / HS20-44 TRAFFIC RATED						

TRT-1500GS□



1500 GAL HS20-44 TRAFFIC RATED TANK NOTES:

- CONCRETE IS 5000 PSI @ 28 DAYS.
- CEMENT IS TYPE V (SULFATE RESISTANT).
- REINFORCEMENT: AS PER ENGINEER REQ.
- TANK WEIGHT IS APPROXIMATELY 17,000 LBS.
- TANK HEIGHT FROM BOTTOM TANK TO TOP OF SLAB IS 5.67'.
- APPROVED GASKETS ON INLETS AND OUTLET.
- INLET HEIGHT FROM BOTTOM OF TANK TO INVERT IS 4.67'.
- OUTLET HEIGHT FROM BOTTOM OF TANK TO INVERT IS 4.42'
- (3) ACCESS OPENINGS.
- TOP AND BOTTOM PLACED WITH 1" MASTIC AT JOINT.
- THIS TANK MUST BE PLACED ON COMPACTED 3/4" ROAD-BASE OR SIMILAR MATERIAL.
- MINIMUM RELATIVE COMPACTION IS 95%.
- DO NOT USE FLOWABLE BACKFILL MATERIALS SUCH AS 3/4" WASHED GRAVELS.
- TANK MUST BE BACKFILLED TO TOP BEFORE WATERTESTING.
- ALL LIFTING EYES IN EACH SECTION MUST BE USED.
- MINIMUM BURY DEPTH 1'-0". MAXIMUM BURY DEPTH 6'-0".
- PLUMBING PER ENGINEER AND SUPPLIED AND INSTALLED BY CONTRACTOR.

AVAILABLE UPON REQUEST:

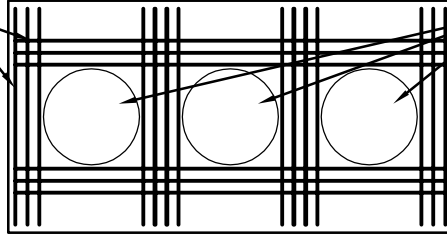
- REINFORCEMENT CERTS.
- CEMENT CERTS.
- AGGRIGATES CERTS.
- ADMIXTURES CERTS.
- CONCRETE TESTING
- MIX DESIGN

BUILT TO:

- **ASTM C-890-13**
- **ASTM C-1613-10**

(3) ADDITIONAL
#4 REBAR @
3' O.C. EA. SIDE
OF OPENING

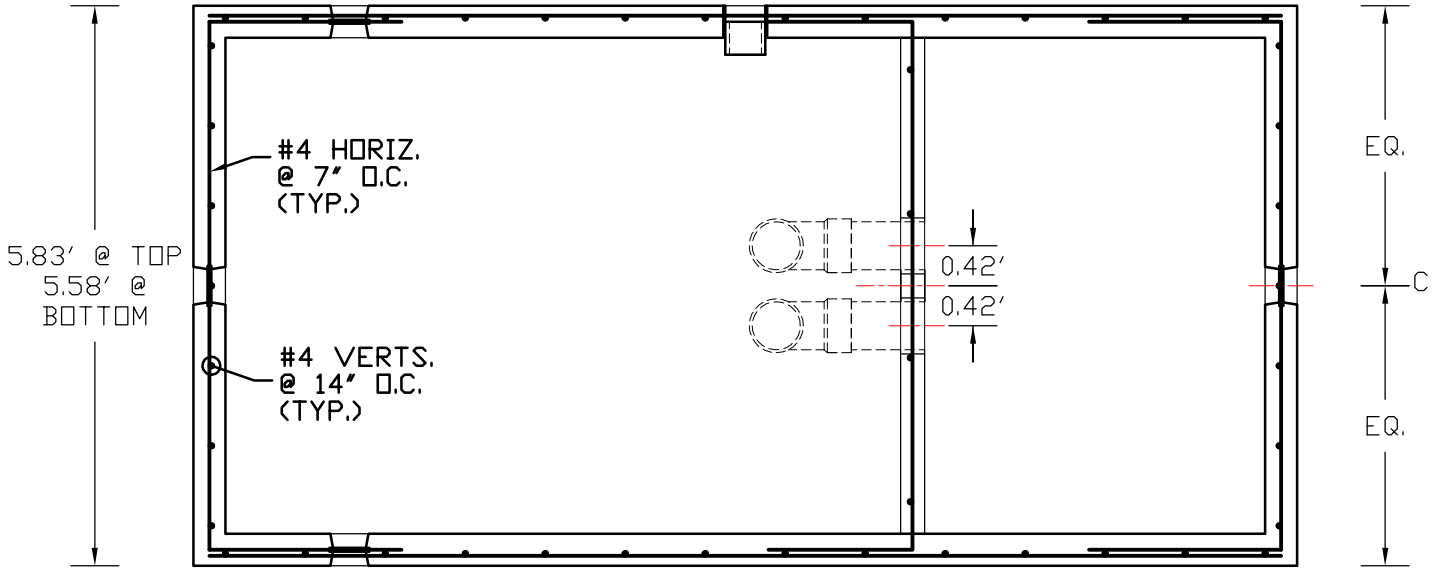
18"Ø - 30"Ø
OPENING



TOP VIEW

11.50' @ TOP
11.25' @ BOTTOM

4" DWV FOR VENT



PLAN VIEW

1.50' WEIR
WALL LAP
(TYP.)

2.00'
LAP (TYP.)

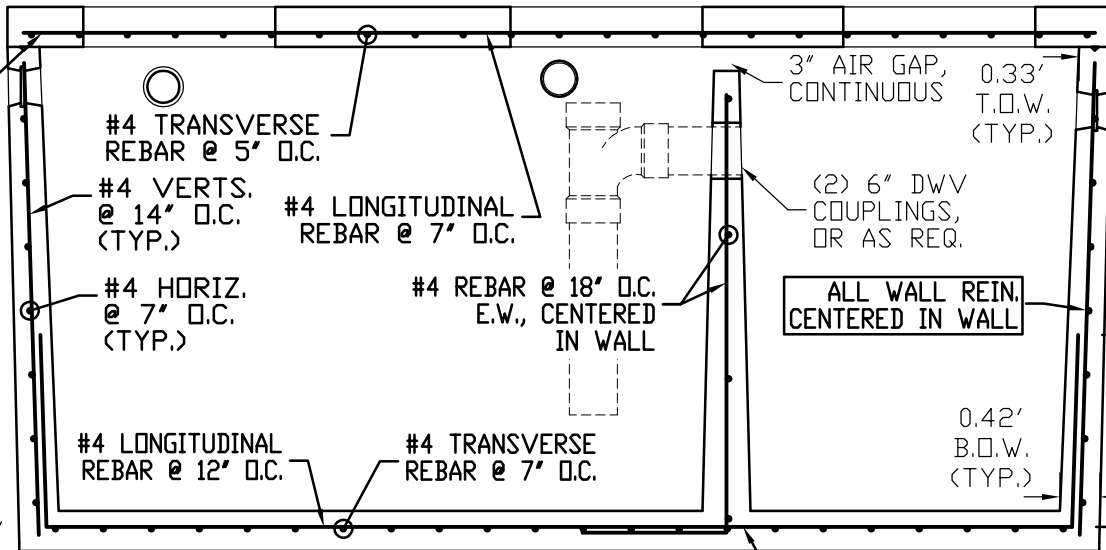
1.79' 4.45' 3.47' 1.79'

0.42'

1½"
COVER

5.25'

0.42'



SECTION VIEW

1.50' WEIR
WALL LAP
(TYP.)

BASE REIN. CENTERED
IN BASE THICKNESS